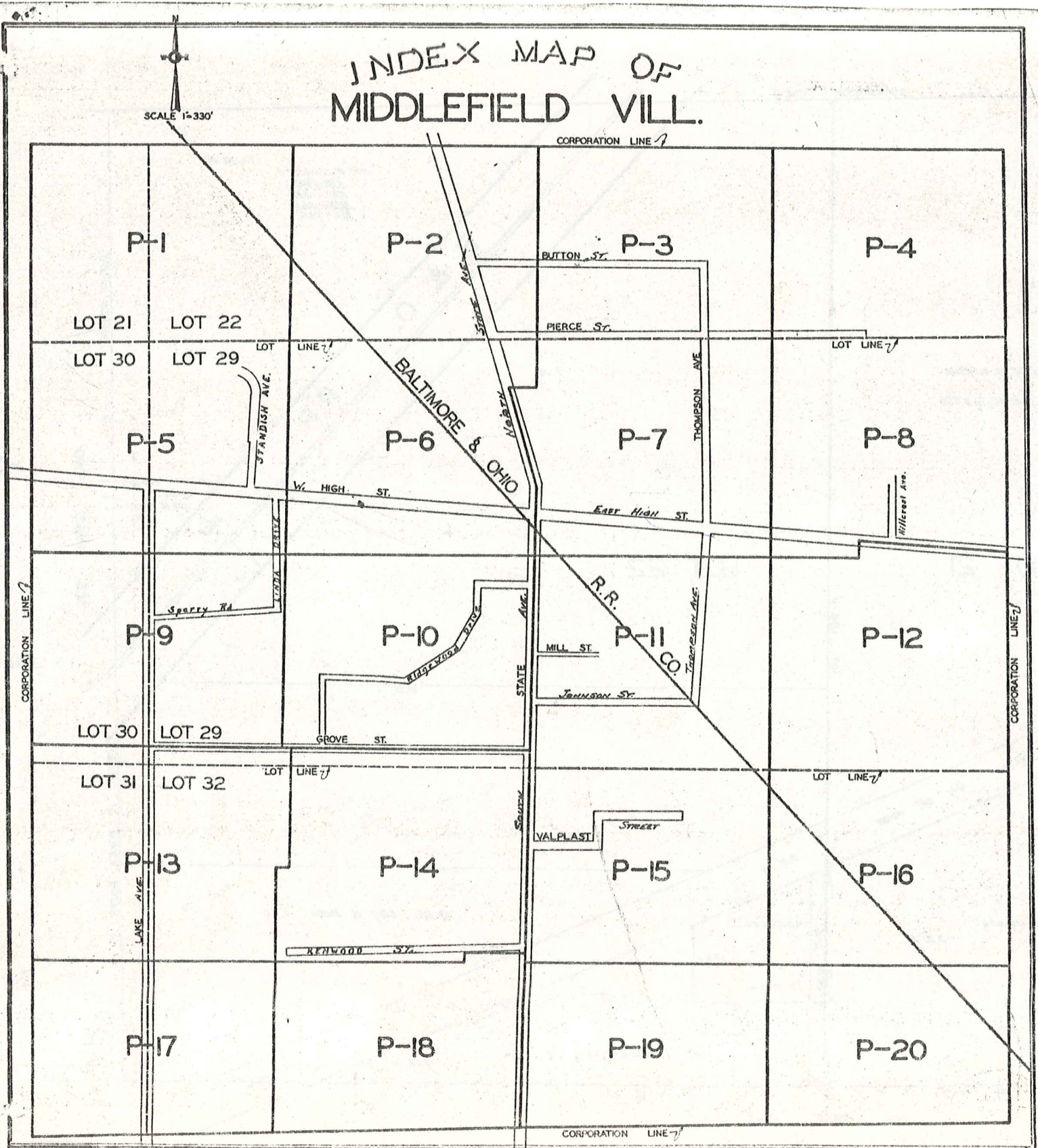
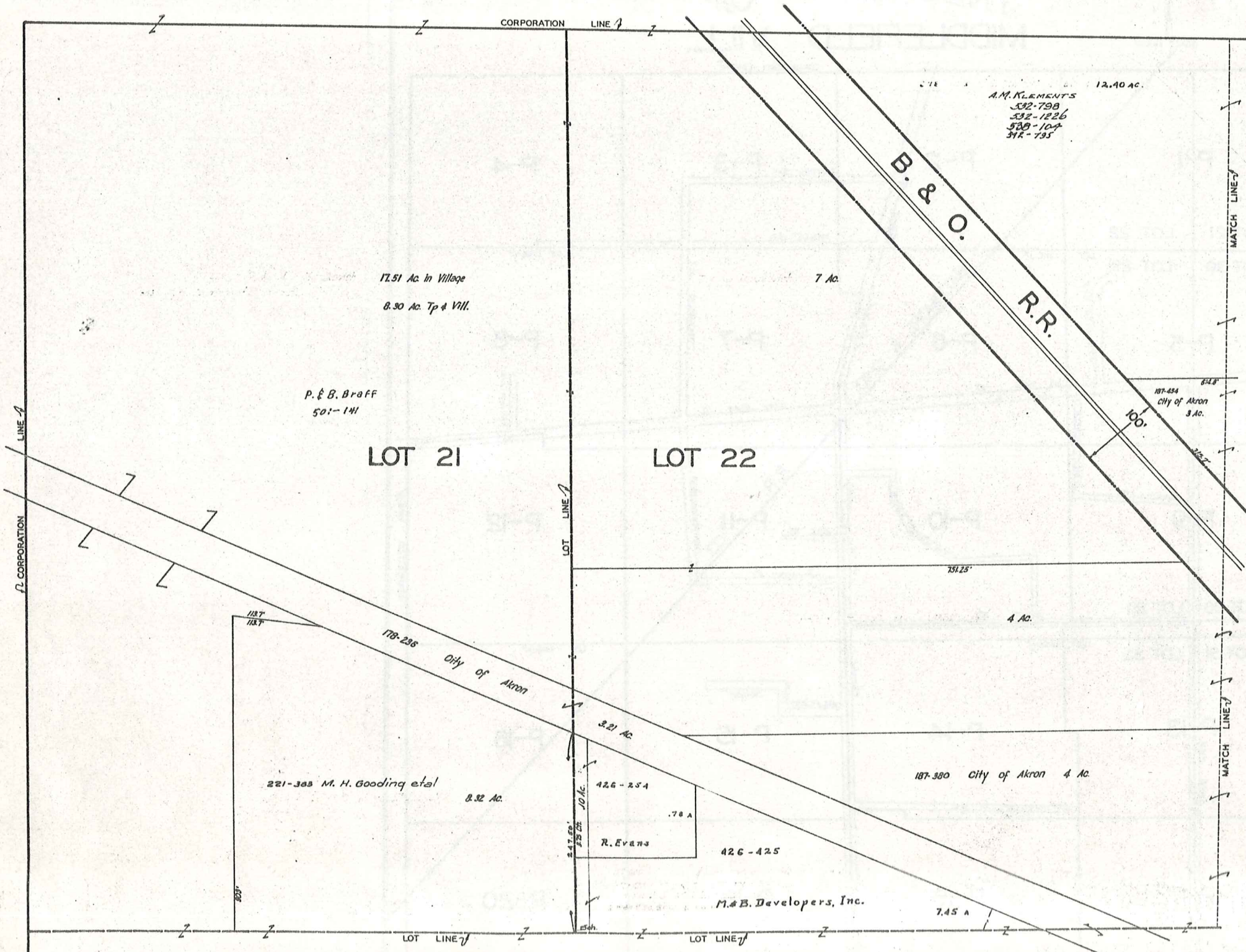


INDEX MAP OF MIDDLEFIELD VILL.

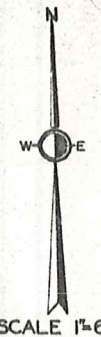
SCALE 1"=330'



MIDDLEFIELD VILLAGE



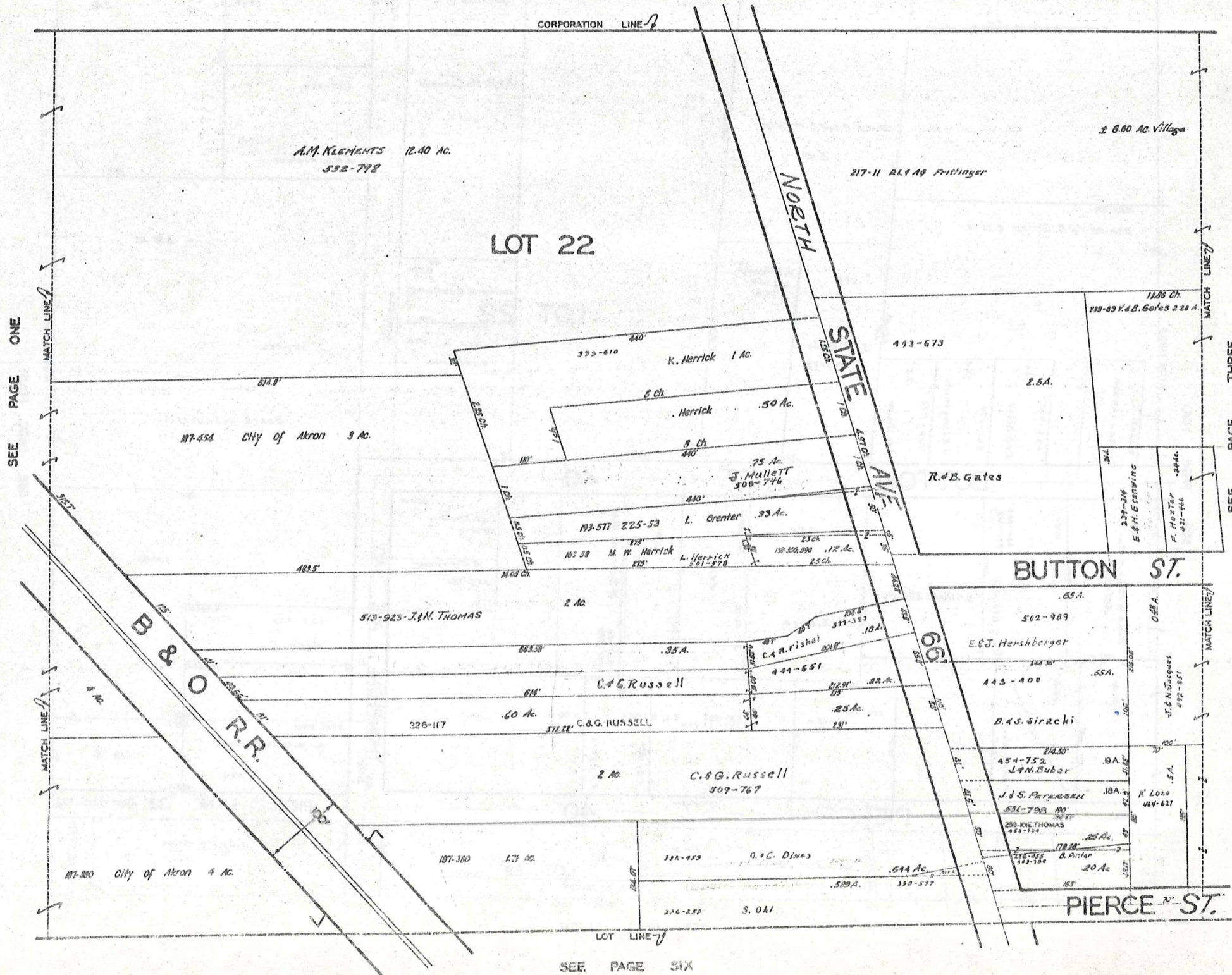
SEE PAGE TWO



SCALE 1"=66'

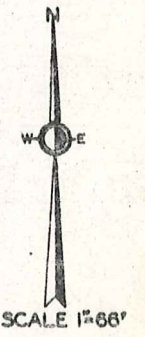
JAN. 1, 1973

SEE PAGE FIVE



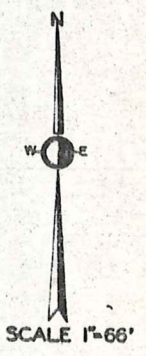
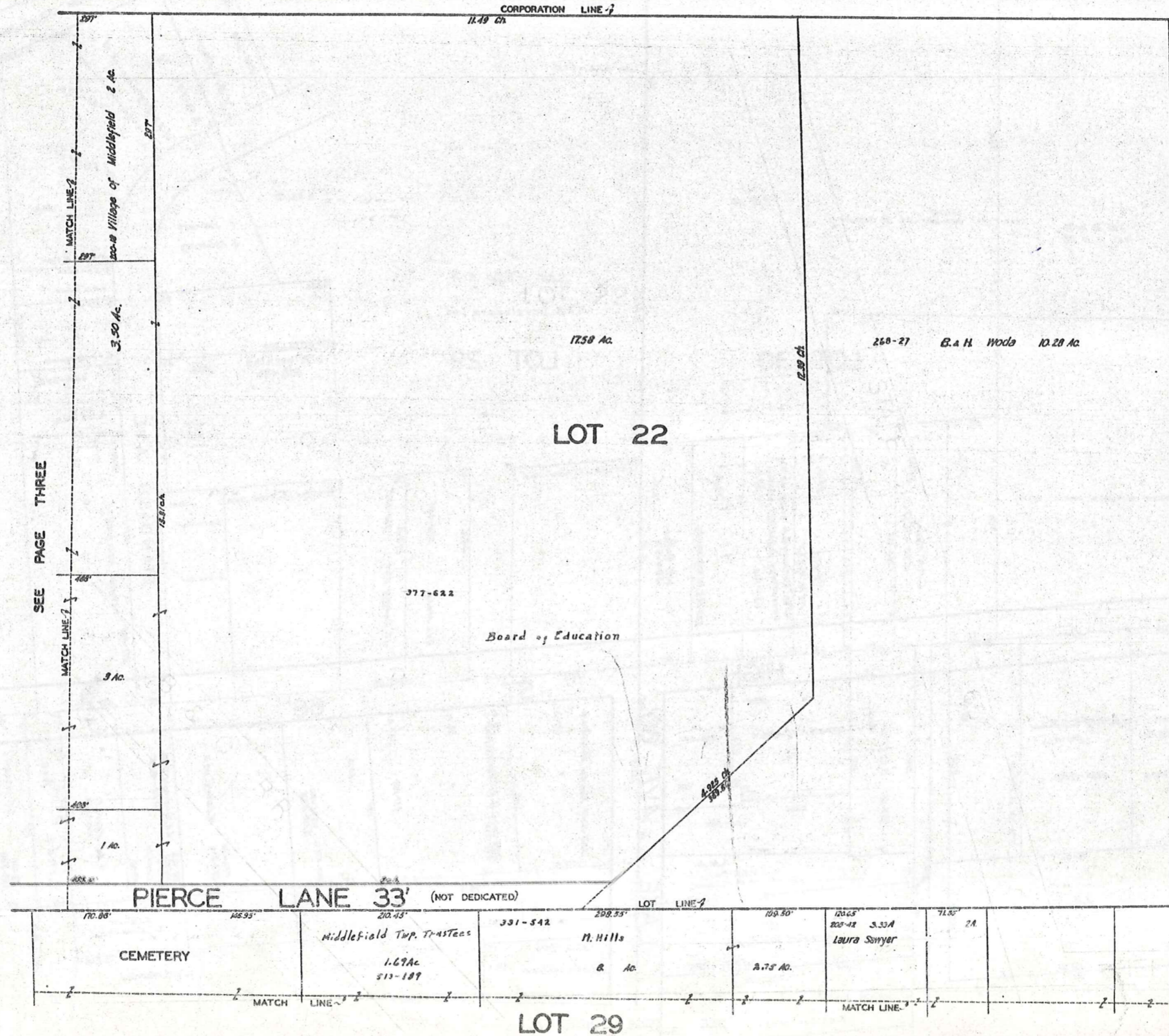
SEE PAGE ONE

SEE PAGE THREE



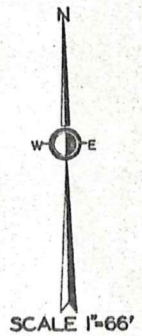
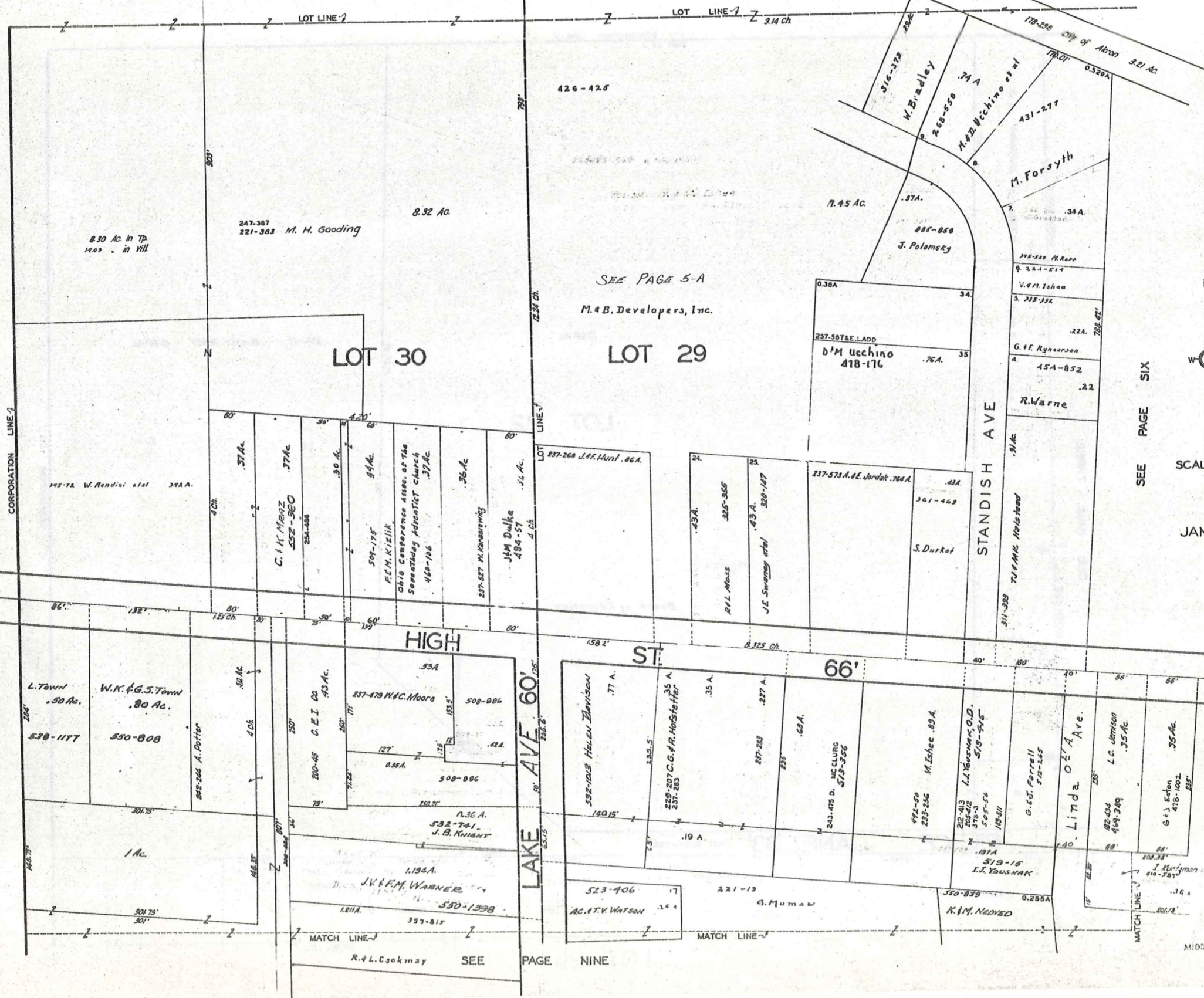
JAN 1, 1978

SEE PAGE SIX



JAN .1, 1975

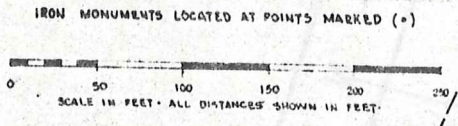
SEE PAGE ONE



SEE PAGE SIX

JAN. 1, 1973

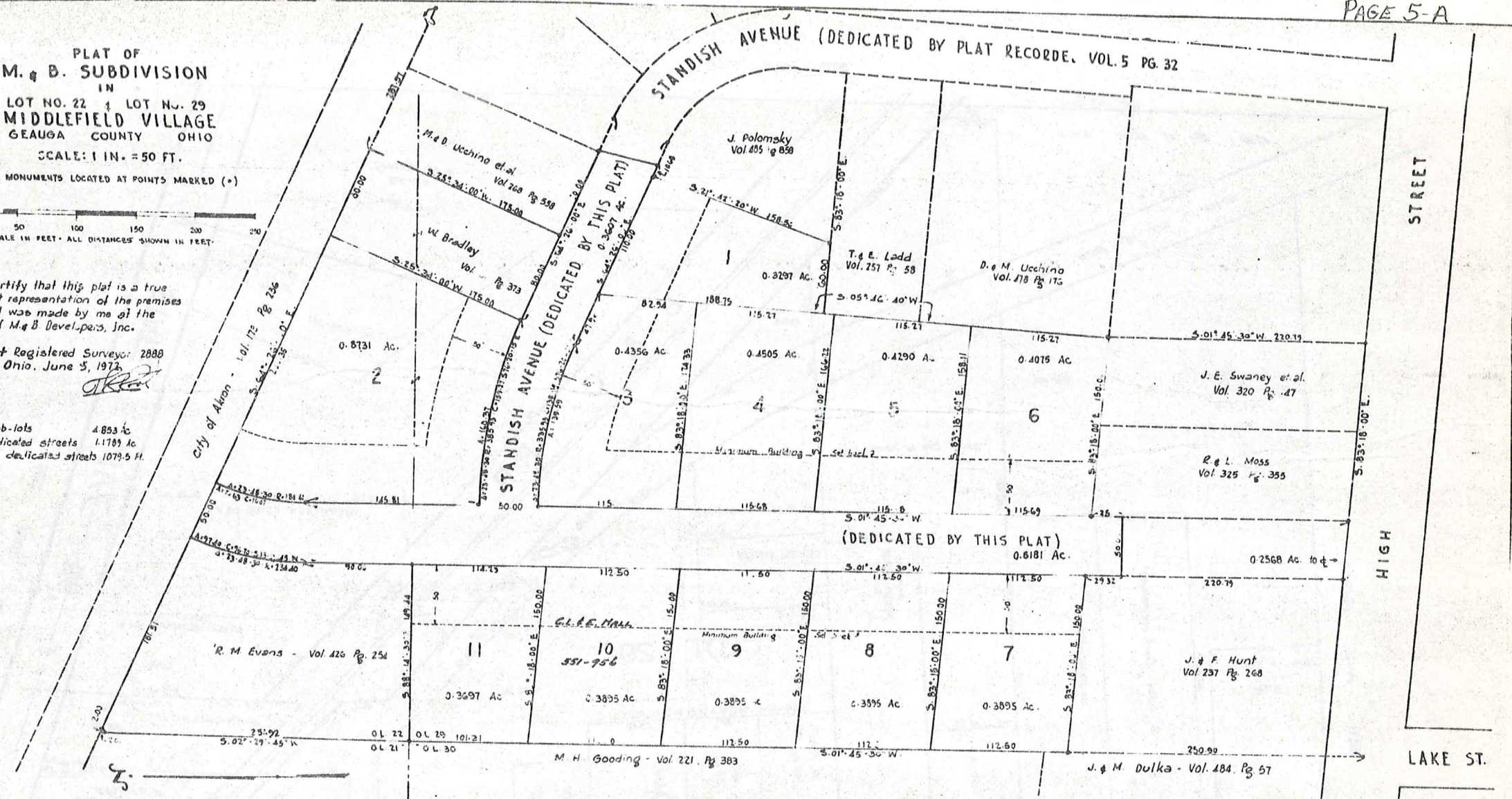
PLAT OF
M. & B. SUBDIVISION
IN
LOT NO. 22 & LOT NO. 29
MIDDLEFIELD VILLAGE
GEAUGA COUNTY OHIO
SCALE: 1 IN. = 50 FT.



I hereby certify that this plat is a true and correct representation of the premises shown and was made by me at the instance of M. & B. Developers, Inc.

T. R. Root Registered Surveyor 2888
Chardon Ohio, June 5, 1972

Total area of sub-lots 4.853 Ac
Total area of dedicated streets 1.1785 Ac
Total length of dedicated streets 1079.5 ft.



M. & B. DEVELOPERS, INC., an Ohio corporation, owner of all the land proposed for subdivision shown hereon, claiming title by or through instrument recorded in volume 126, page 125, of Geauga County records of deeds, hereby accepts and adopts this plat and certifies that the same was prepared at its order and request. Said Corporation hereby dedicates to public use for highway purposes the area within the boundaries of Standish Avenue as the same are shown, and certifies that said area is free of all encumbrances. Said Corporation now requests acceptance of this Dedication and Subdivision by Middlefield Village, and that this Plat then be placed upon the records of Geauga County.
In witness whereof said Corporation sets its hand and Corporate seal at
Ohio this _____ day of January, 1973

Witness _____ by _____ its _____
Witness _____ by _____ its _____

State of Ohio ss. Before me a Notary Public in and for said County and State, personally appeared the above named M. & B. Developers, Inc. by _____ and _____ who acknowledged that they did sign the foregoing instrument, and that the same is the free act and deed of said Corporation and the free act and deed of each of them personally and as such officers. In testimony whereof I have hereunto set my hand and official seal at _____ Ohio this _____ day of January, 1973

Notary Public

FOR MIDDLEFIELD VILLAGE
Acceptance recommended _____
Date _____ for _____
Acceptance recommended *Thomas C. Cook, P.E.*
Date *Jan. 26, 1973* for *Village Engineer*
Acceptance recommended _____
Date _____ for _____

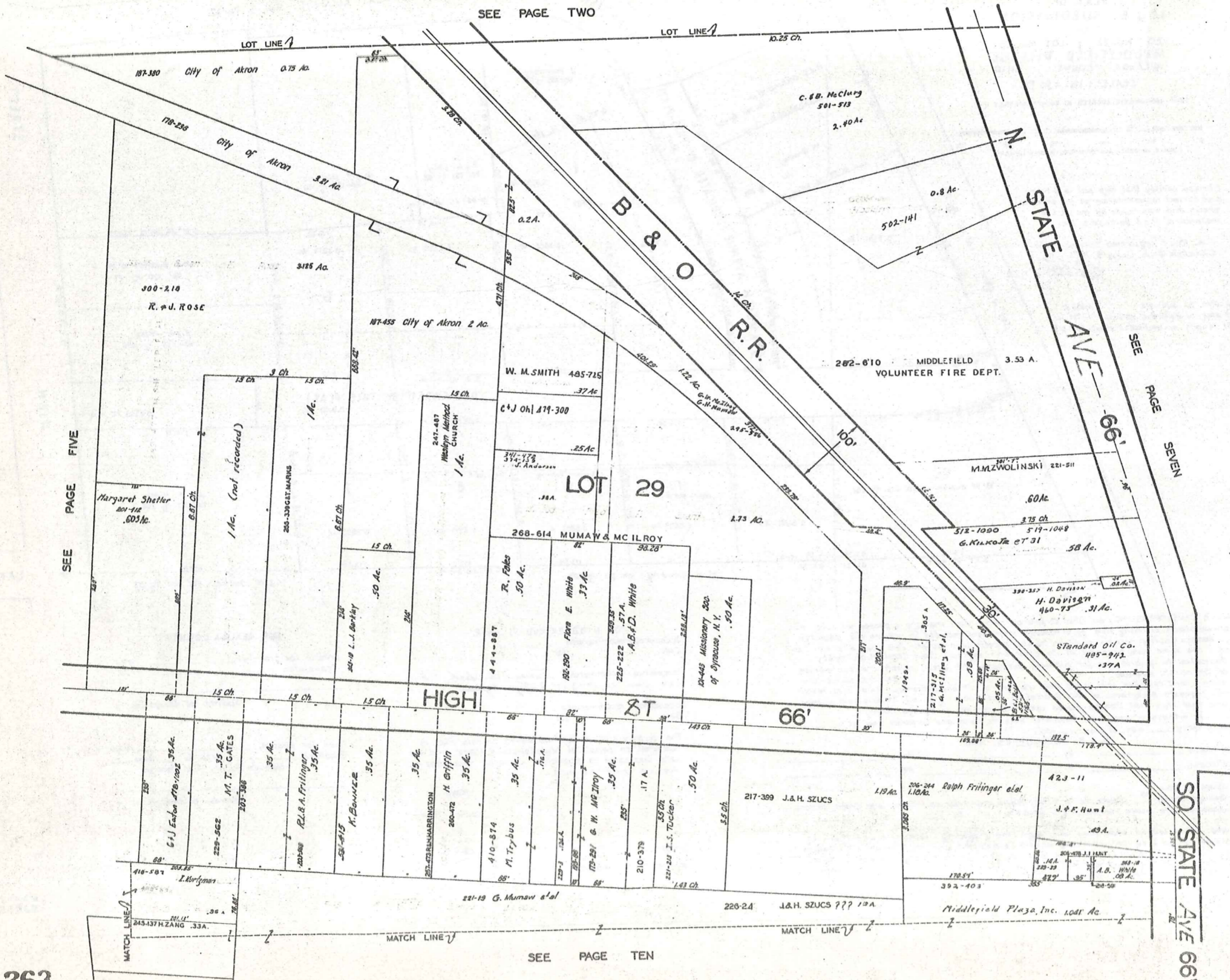
The subdivision of land as shown on this Plat is accepted on behalf of Middlefield Village, and the land dedicated to public use is hereby accepted as such for said Village.

Mayor _____
Council President _____
Clerk _____
by Ord. #481 adopted _____ 1972

FOR GEAUGA COUNTY
Entered for transfer _____ 1973
Transferred _____ 1973
Auditor of Geauga County _____

Filed for Record _____ 1973
Recorded _____ 1973 Vol. _____ Page _____
Gauga County Plat Records
Recorder of Geauga County _____

SEE PAGE TWO



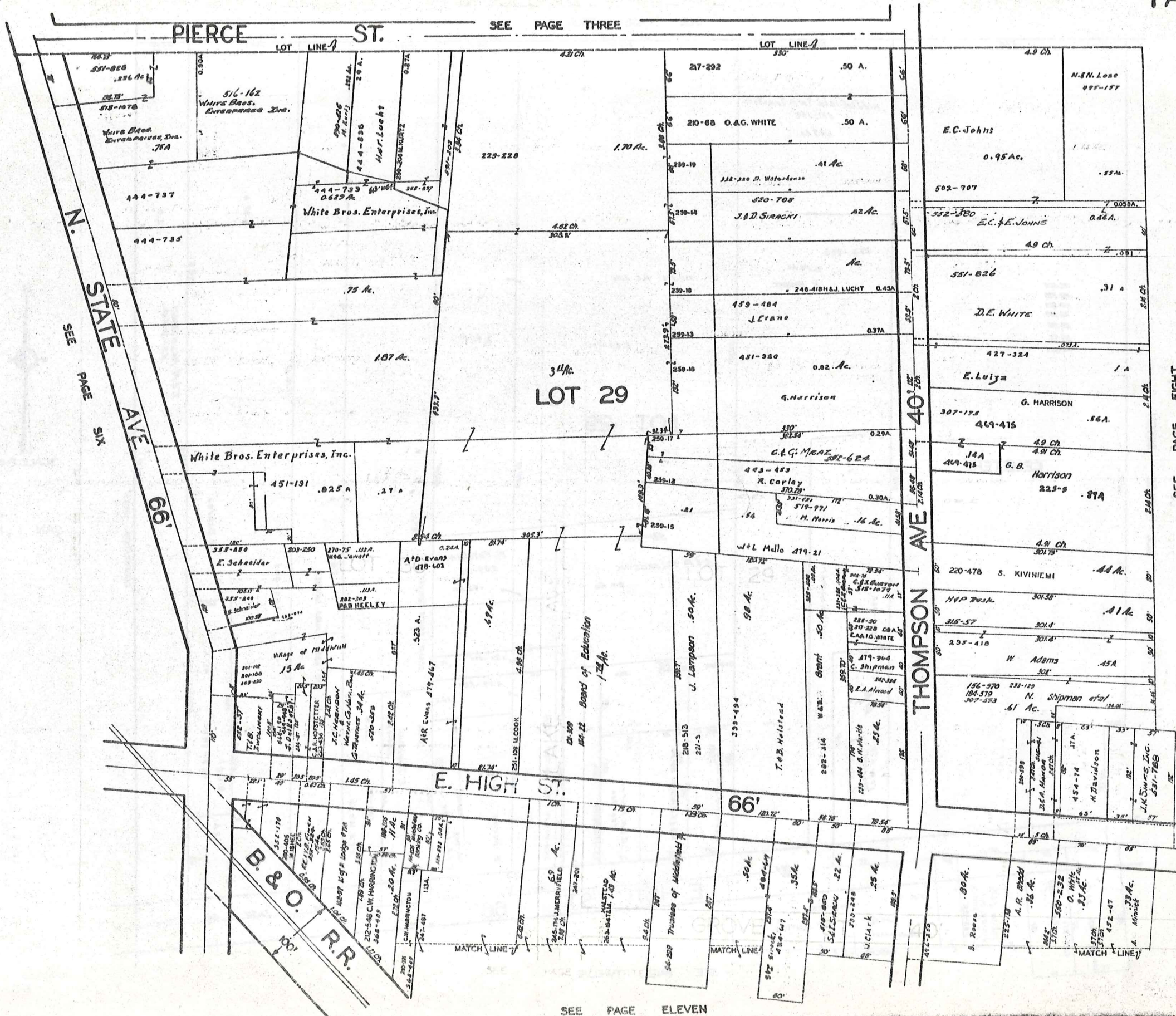
SCALE 1"=66'

JAN. 1, 1979

SEE PAGE FIVE

SEE PAGE SEVEN

SEE PAGE TEN

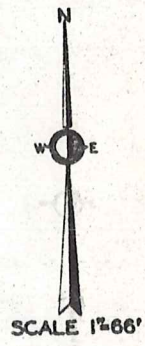


SEE PAGE SIX

STATE AVE 66'

SEE PAGE THREE

SEE PAGE EIGHT

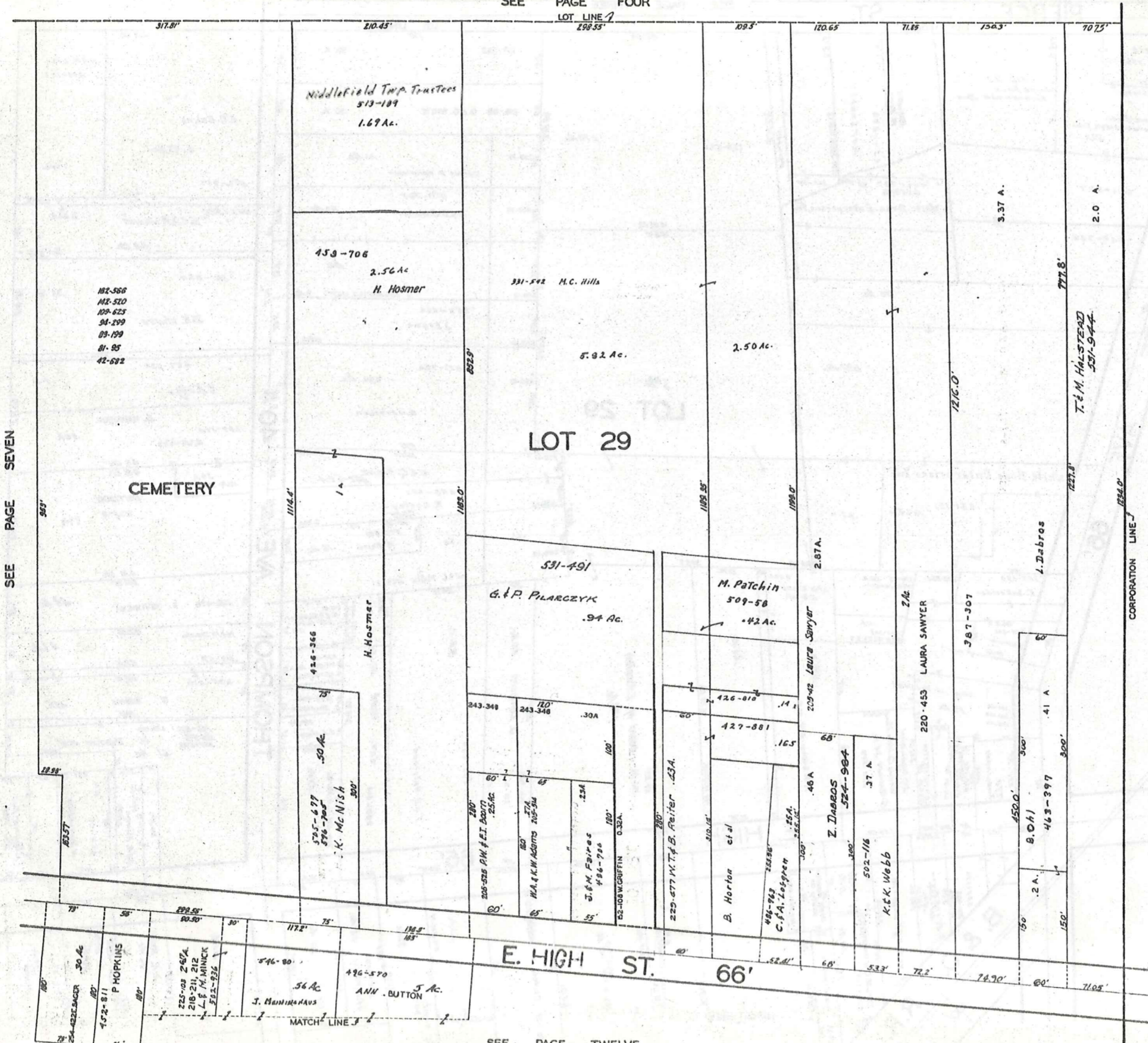


JAN 1, 1978

SEE PAGE ELEVEN

SEE PAGE FOUR

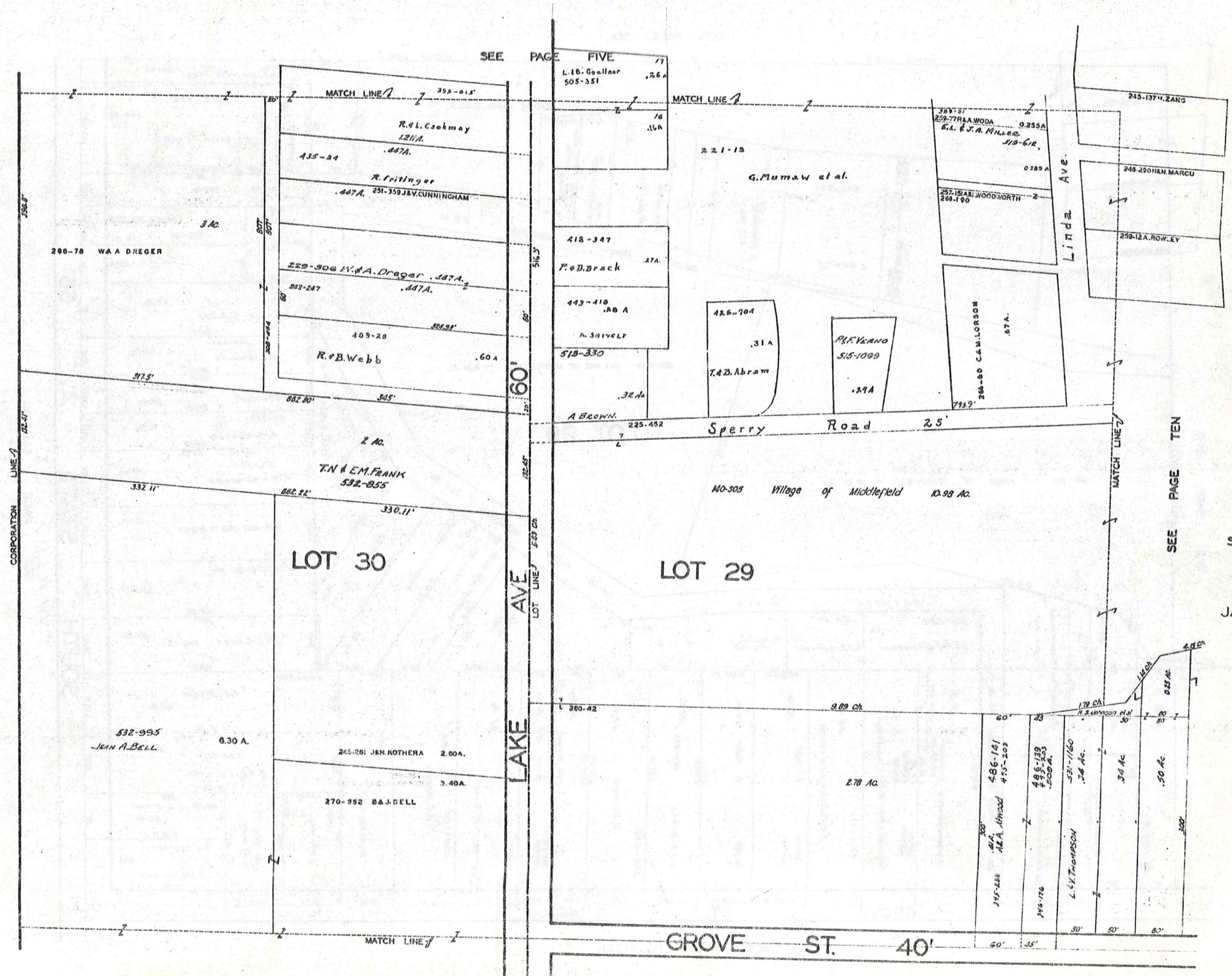
LOT LINE 1



JAN 1, 1973

SEE PAGE SEVEN

SEE PAGE TWELVE



SEE PAGE FIVE

SEE PAGE TEN

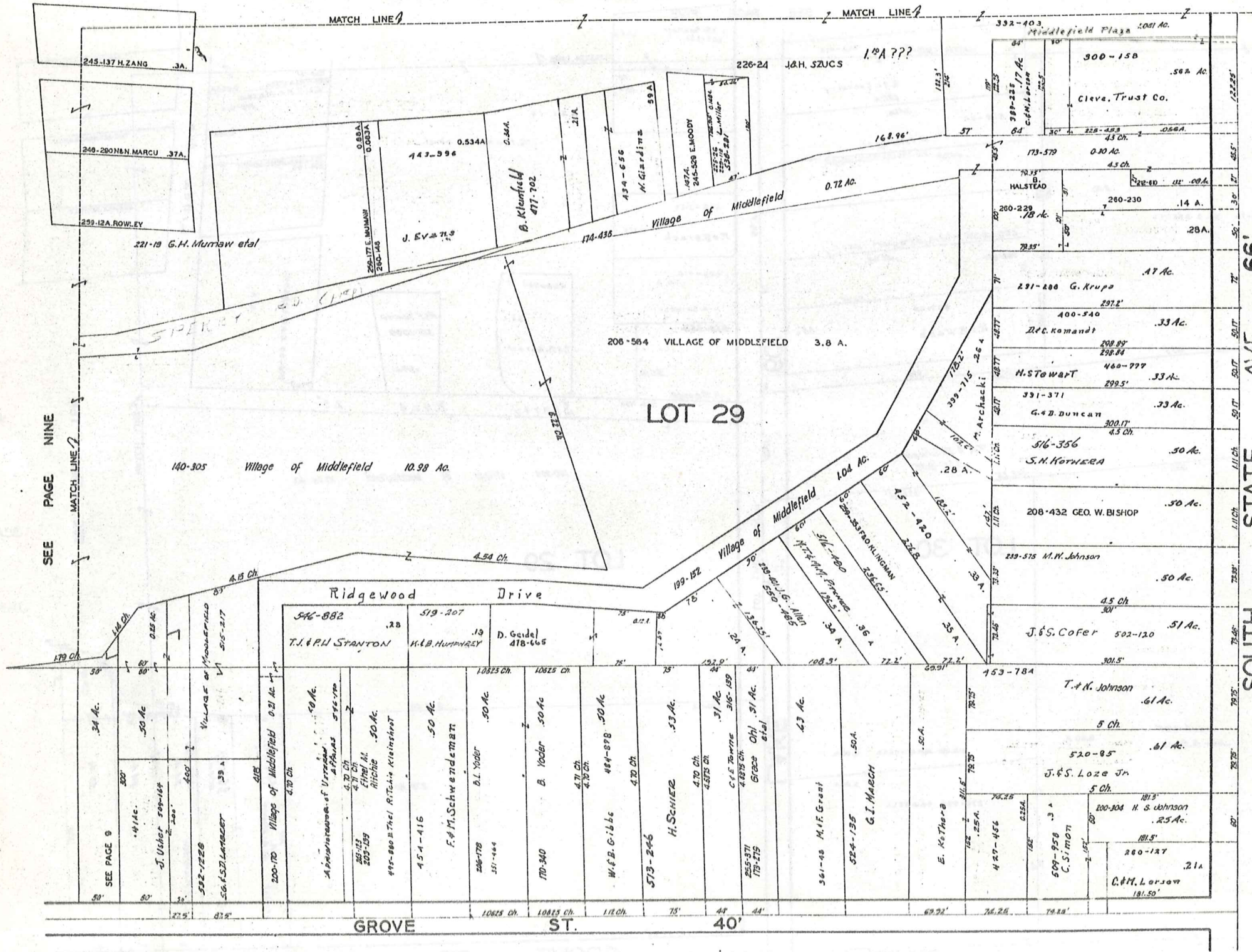
SEE PAGE THIRTEEN



JAN. 1, 1973

MIDDLEFIELD VILLAGE

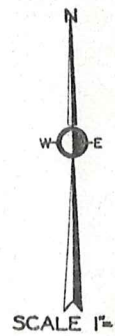
SEE PAGE SIX



SEE PAGE NINE

SOUTH STATE AVE 66'

SEE PAGE ELEVEN

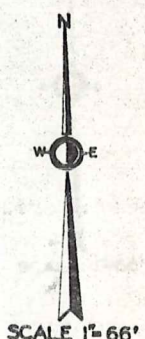
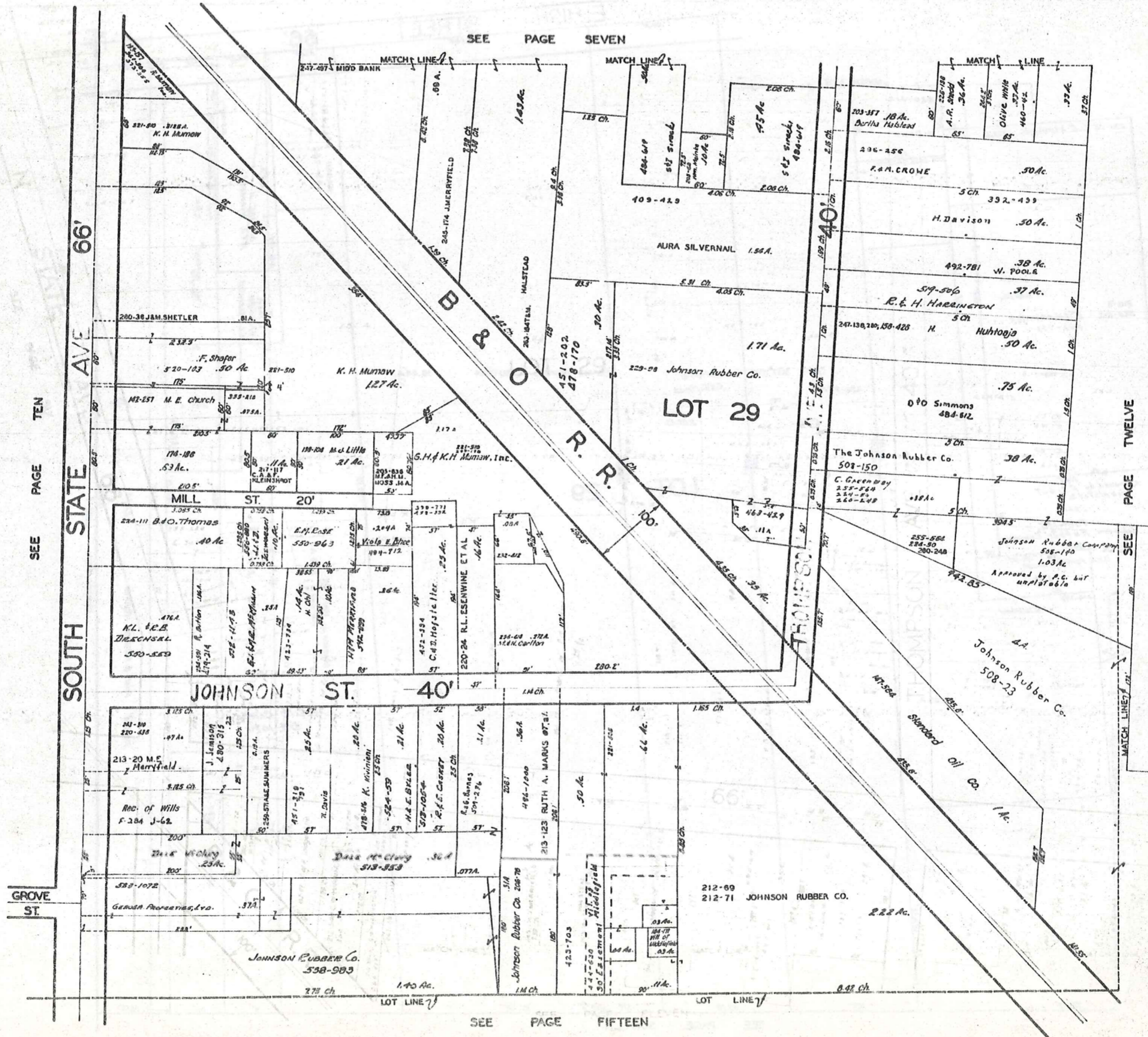


SCALE 1"=66'

JAN. 1, 1973

SEE PAGE FOURTEEN

MIDDLEFIELD VILLAGE

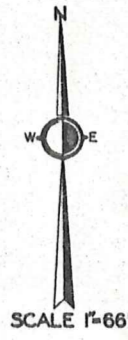
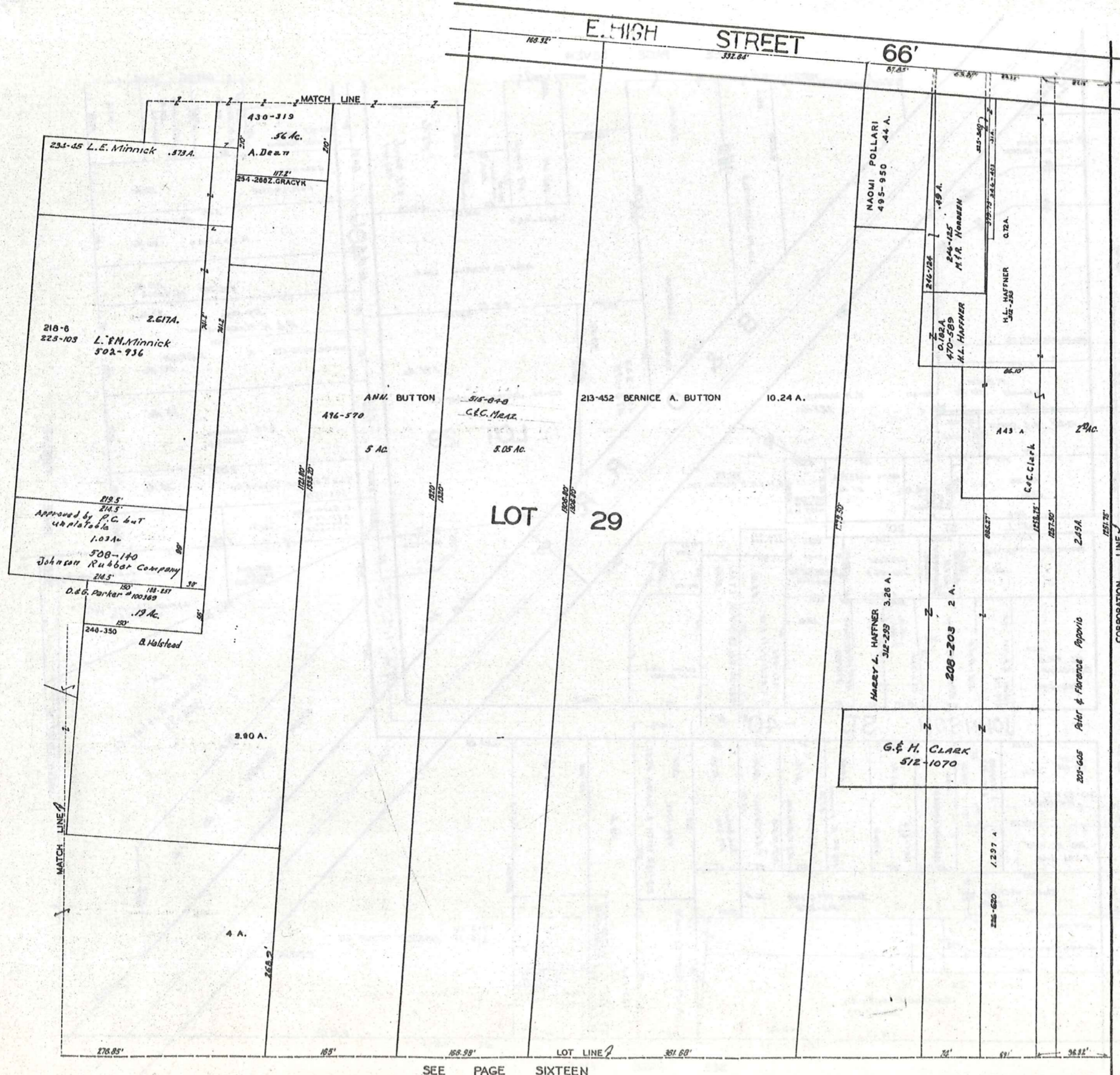


SCALE 1"=66'

JAN. 1, 1978

SEE PAGE EIGHT

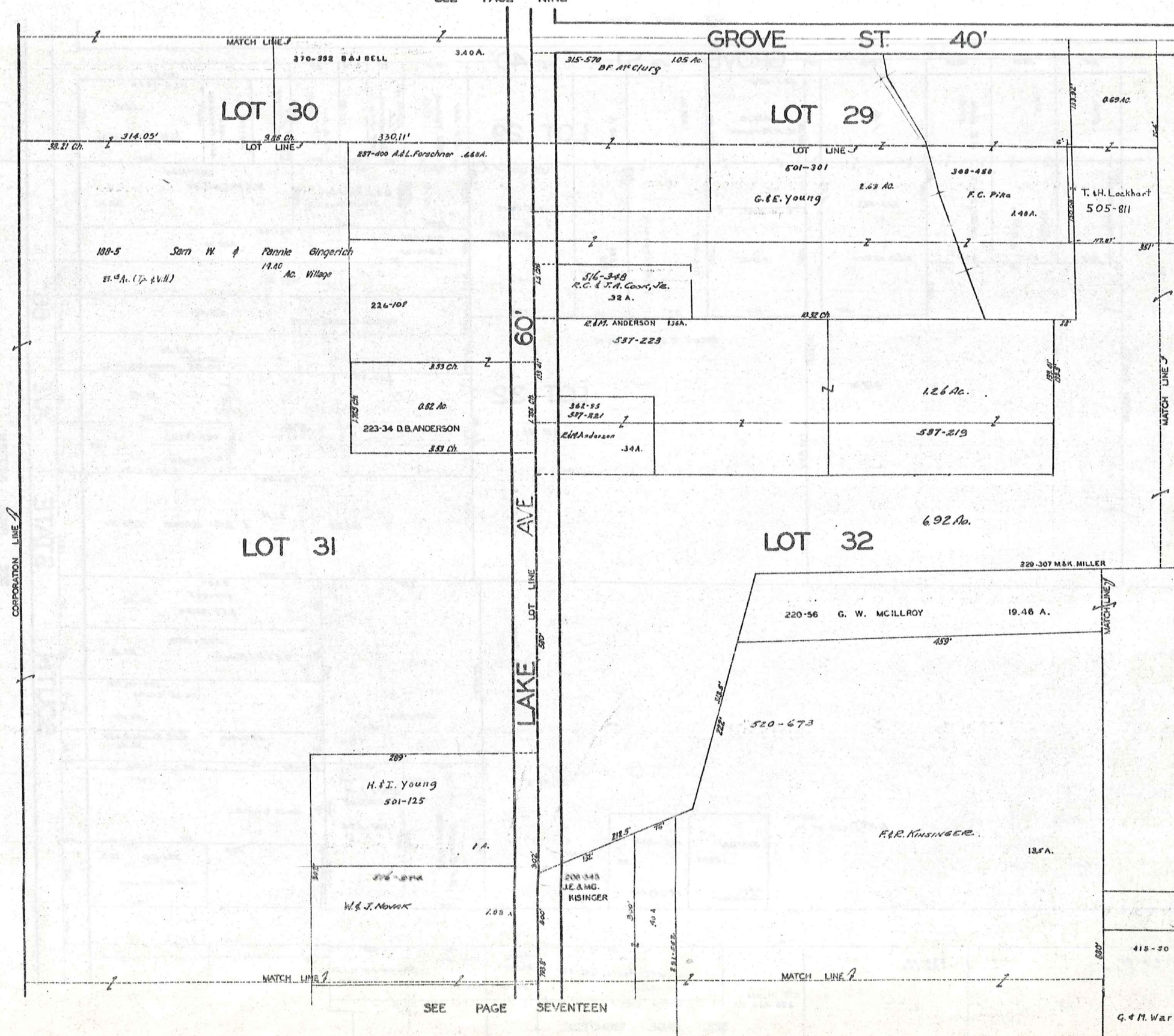
SEE PAGE ELEVEN



JAN. 11, 1973

SEE PAGE SIXTEEN

SEE PAGE NINE



SCALE 1"=66'

JAN 1, 1973

SEE PAGE FOURTEEN

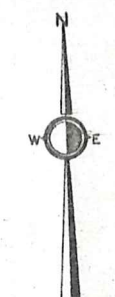
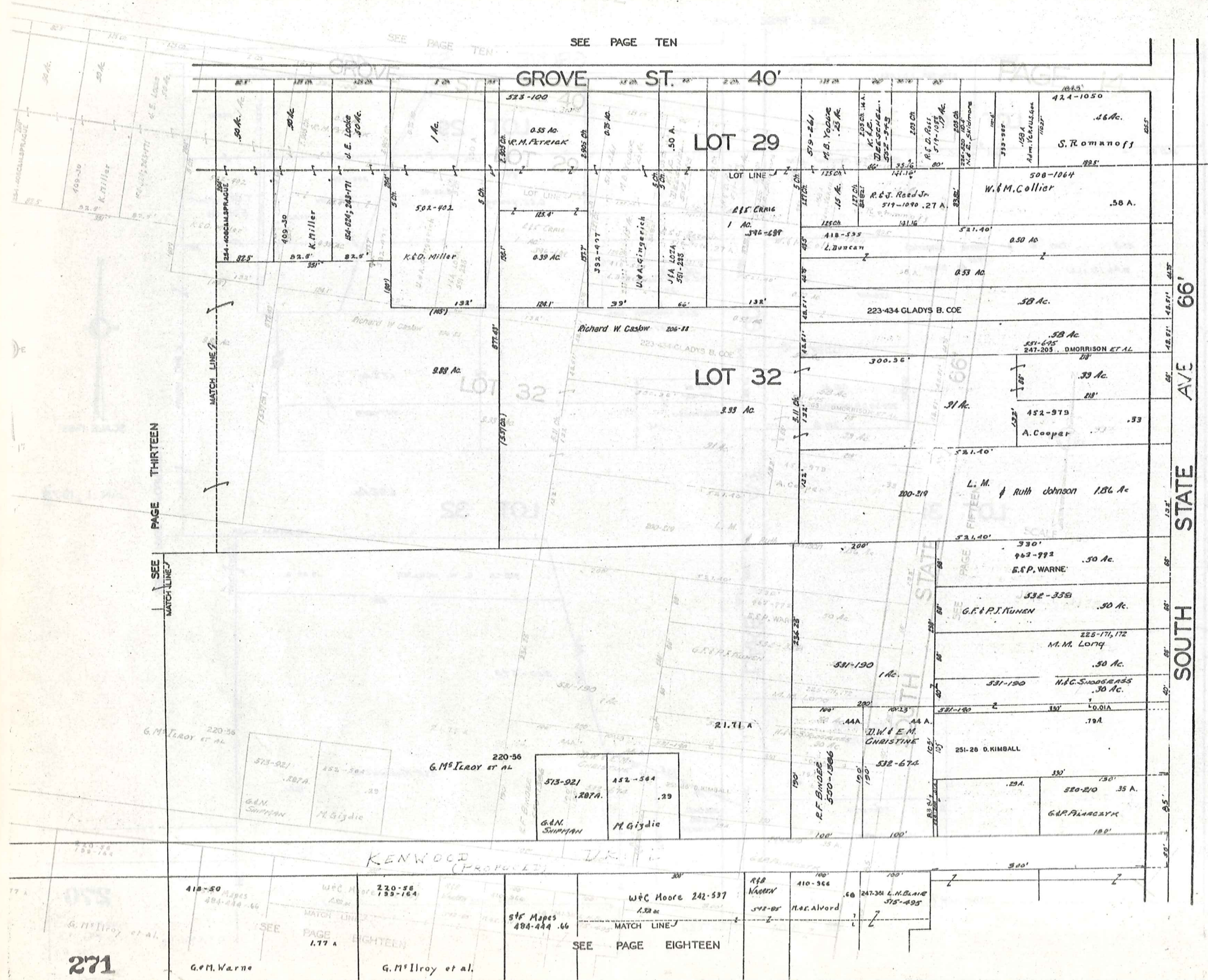
SEE PAGE SEVENTEEN

418-30
270
 MIDDLEFIELD VILLAGE
 PG. 13
 177 A
 G. & M. Warner

SEE PAGE TEN

PAGE THIRTEEN

SEE MATCH LINE

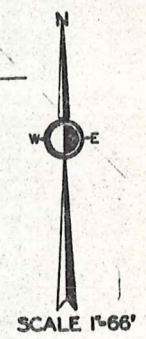
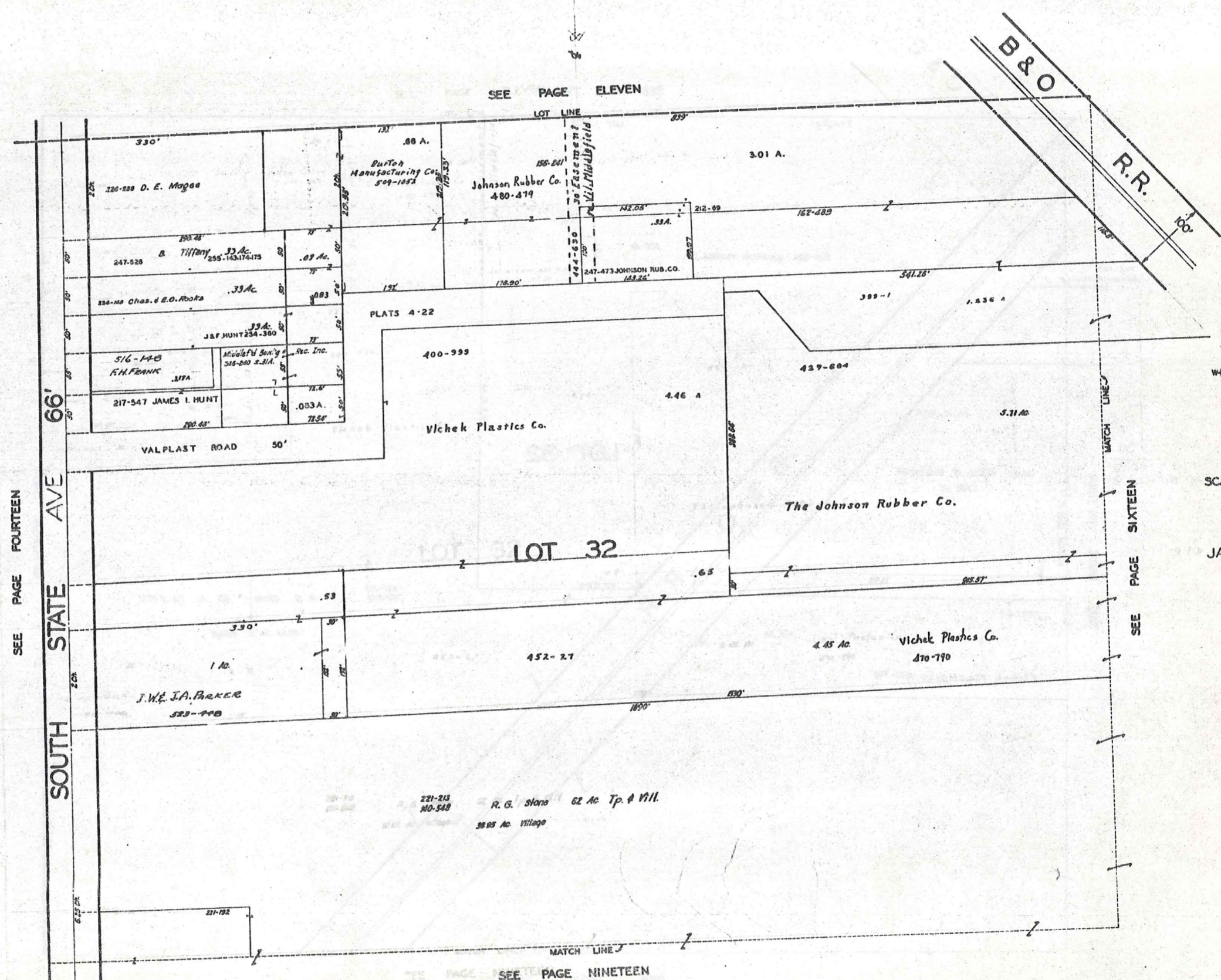


SCALE 1"=66'

JAN 1, 1975

SEE PAGE FIFTEEN

SEE PAGE ELEVEN



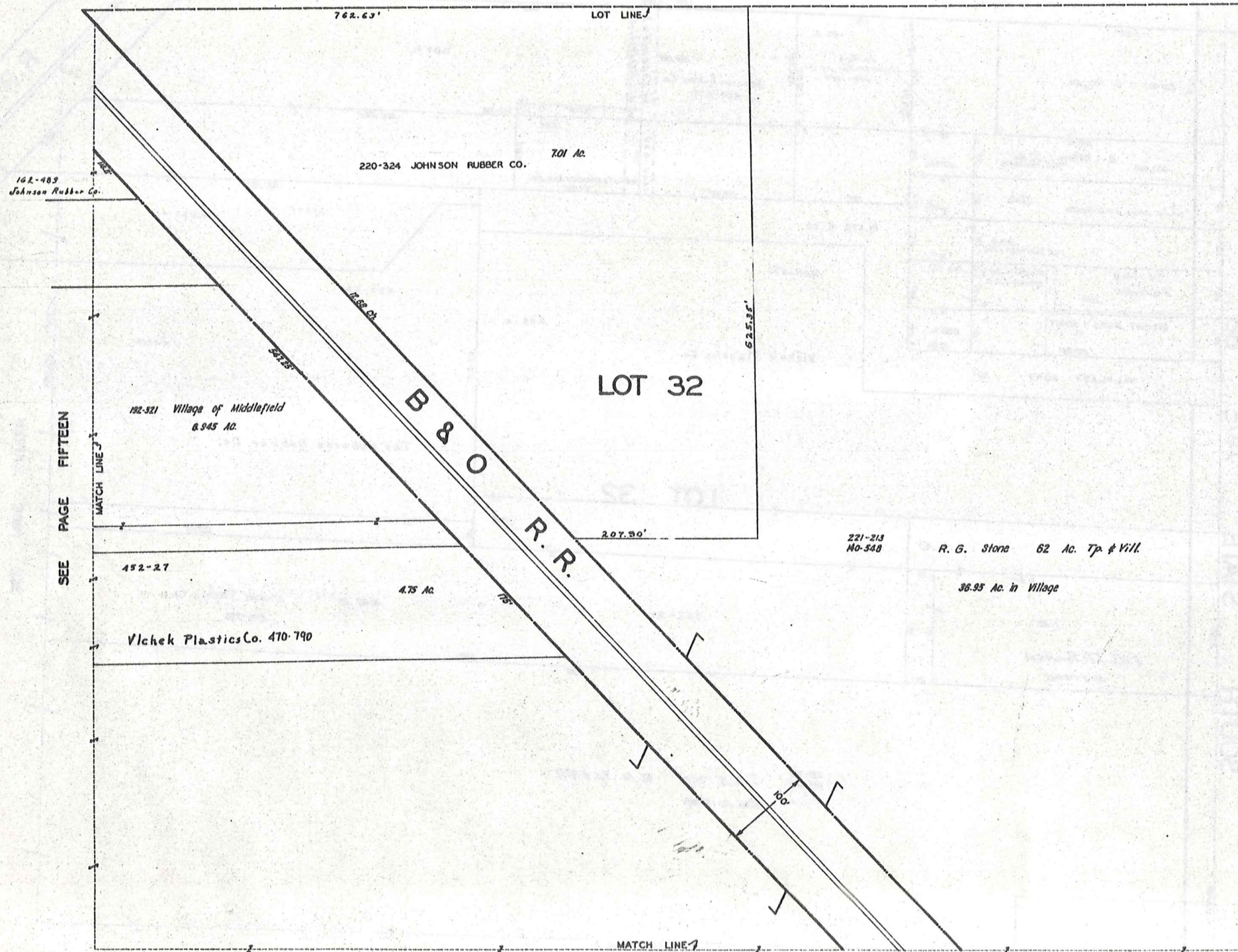
JAN. 1, 1973

SEE PAGE FOURTEEN

SEE PAGE SIXTEEN

SEE PAGE NINETEEN

SEE PAGE TWELVE



SEE PAGE FIFTEEN

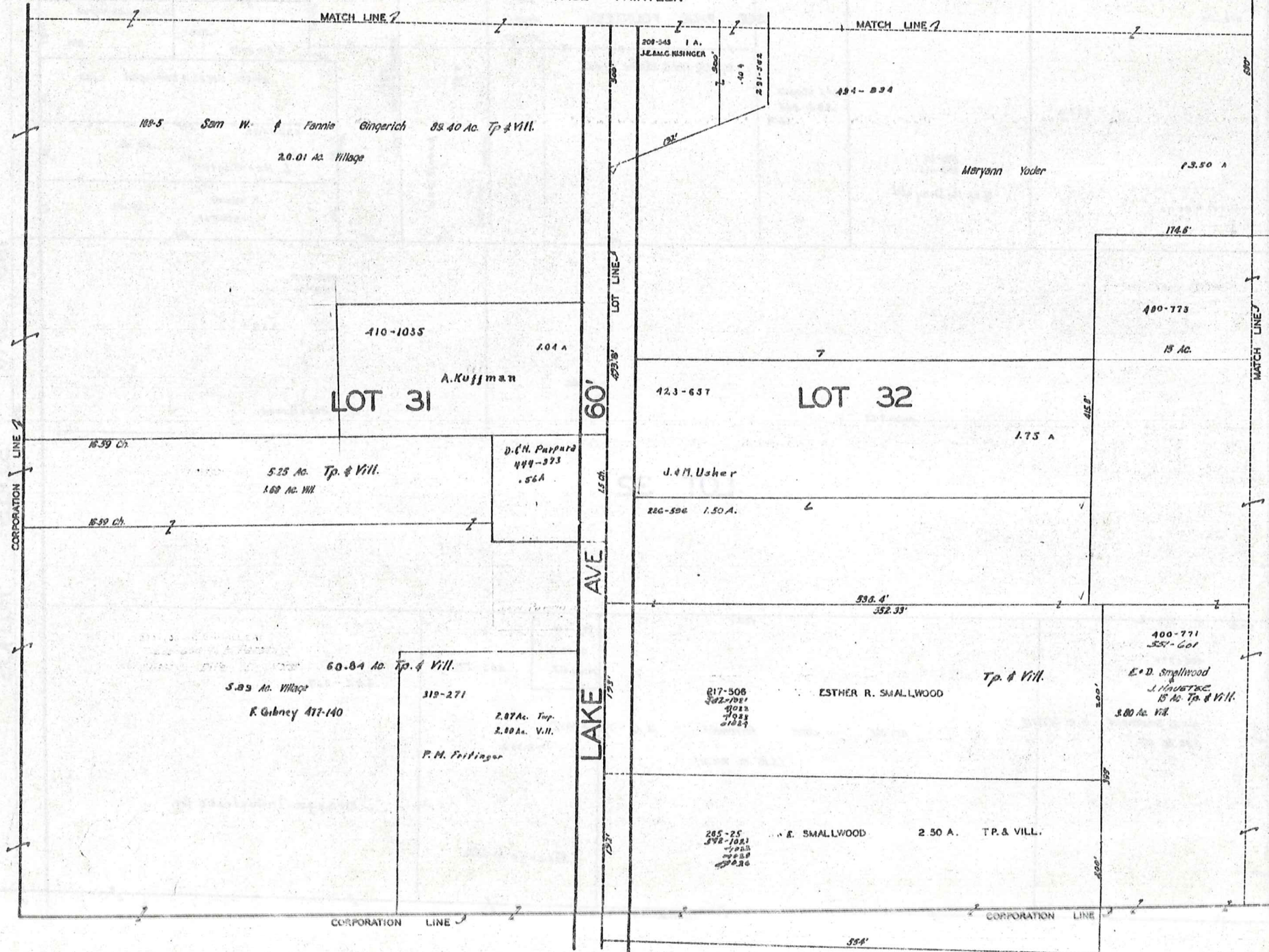
SEE PAGE TWENTY



SCALE 1"=66'

JAN 1, 1973

SEE PAGE THIRTEEN

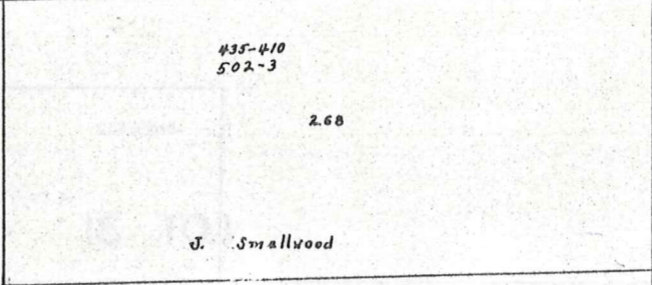
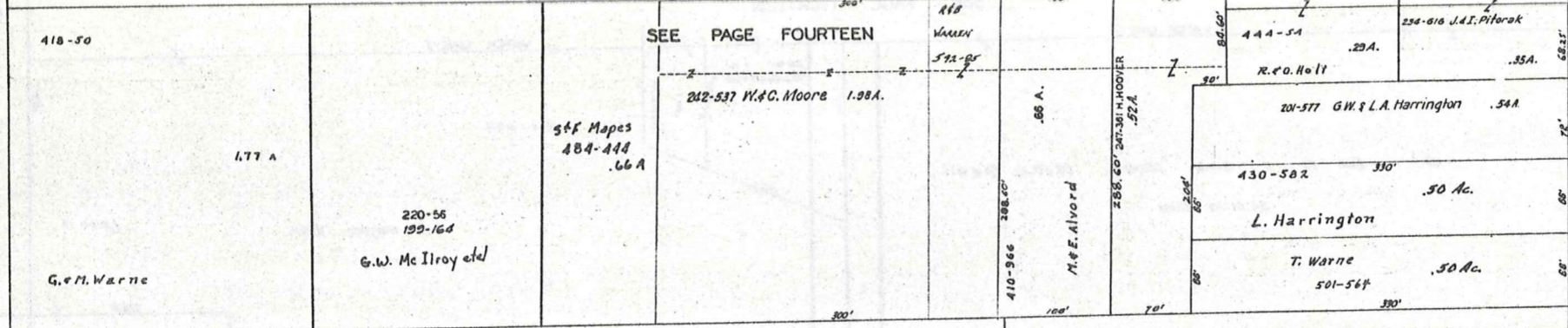


SCALE 1"=66'

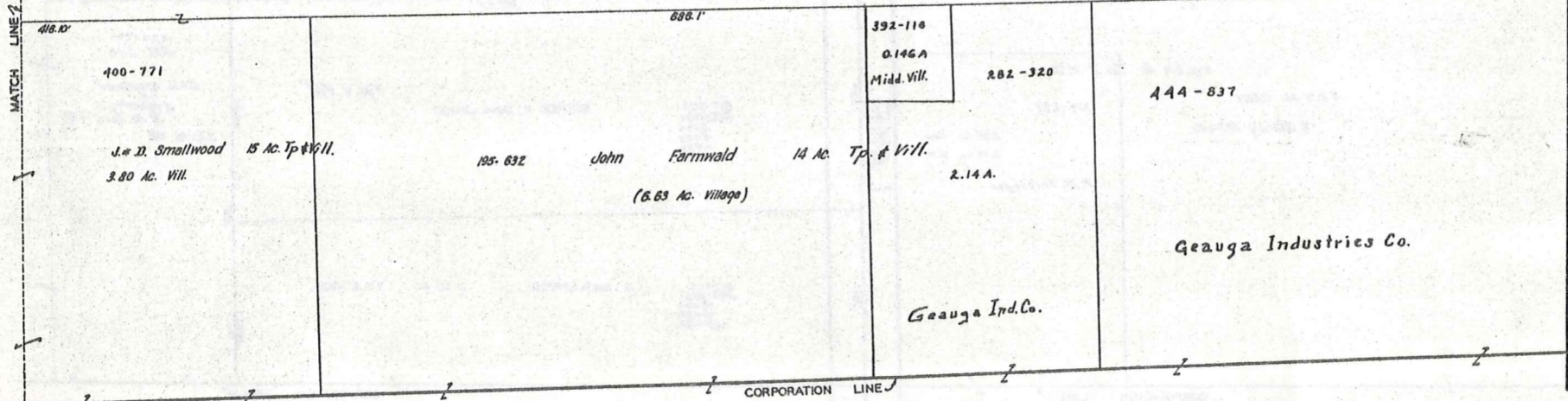
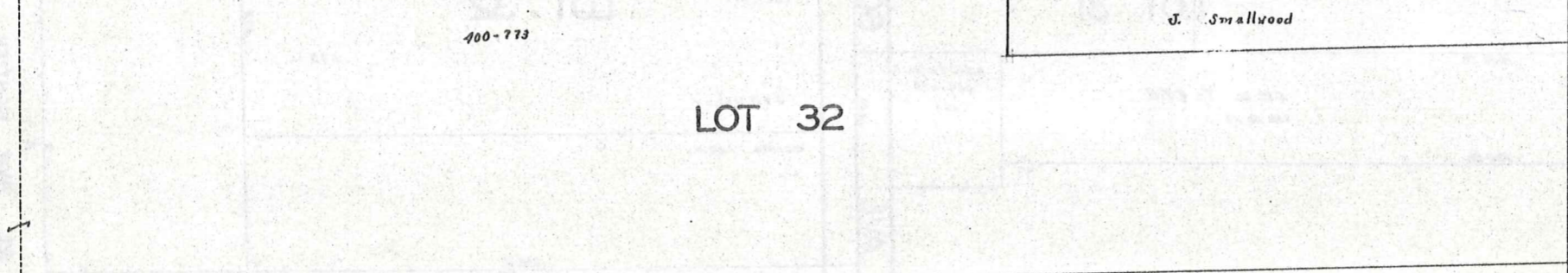
JAN 11, 1973

SEE PAGE EIGHTEEN

KENWOOD DRIVE 50'

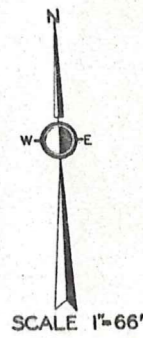


SEE PAGE SEVENTEEN



SOUTH STATE AVE 66'

SEE PAGE NINETEEN



JAN. 1, 1973

SEE PAGE SIXTEEN

MATCH LINE 2

221-219
MO-548

R. G. Stone 62 Ac. Tp. & Vill.
36.95 Ac. in Village.

Stone

159-458 E. T. Steele Jr. et al
51.50 Ac. Tp. & Vill.
0.45 Ac. in Vill.

B & O R.R.

LOT 32

165 Ac. in Tp.

Federal Improvement Company

486-112 20.906 Ac.

SEE PAGE NINETEEN

MATCH LINE 1

MATCH LINE 1

18 Ac.

843.5'

37.45 Ch.

930.5'

3035'

CORPORATION LINE

CORPORATION LINE

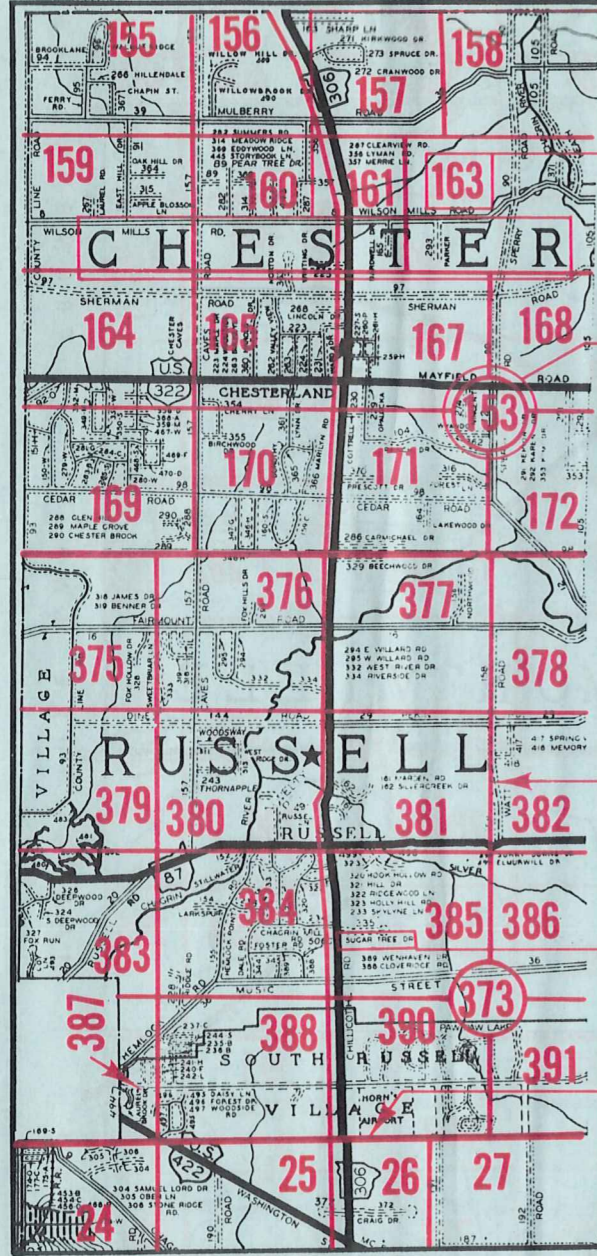


SCALE 1"=66'

JAN .1, 1973

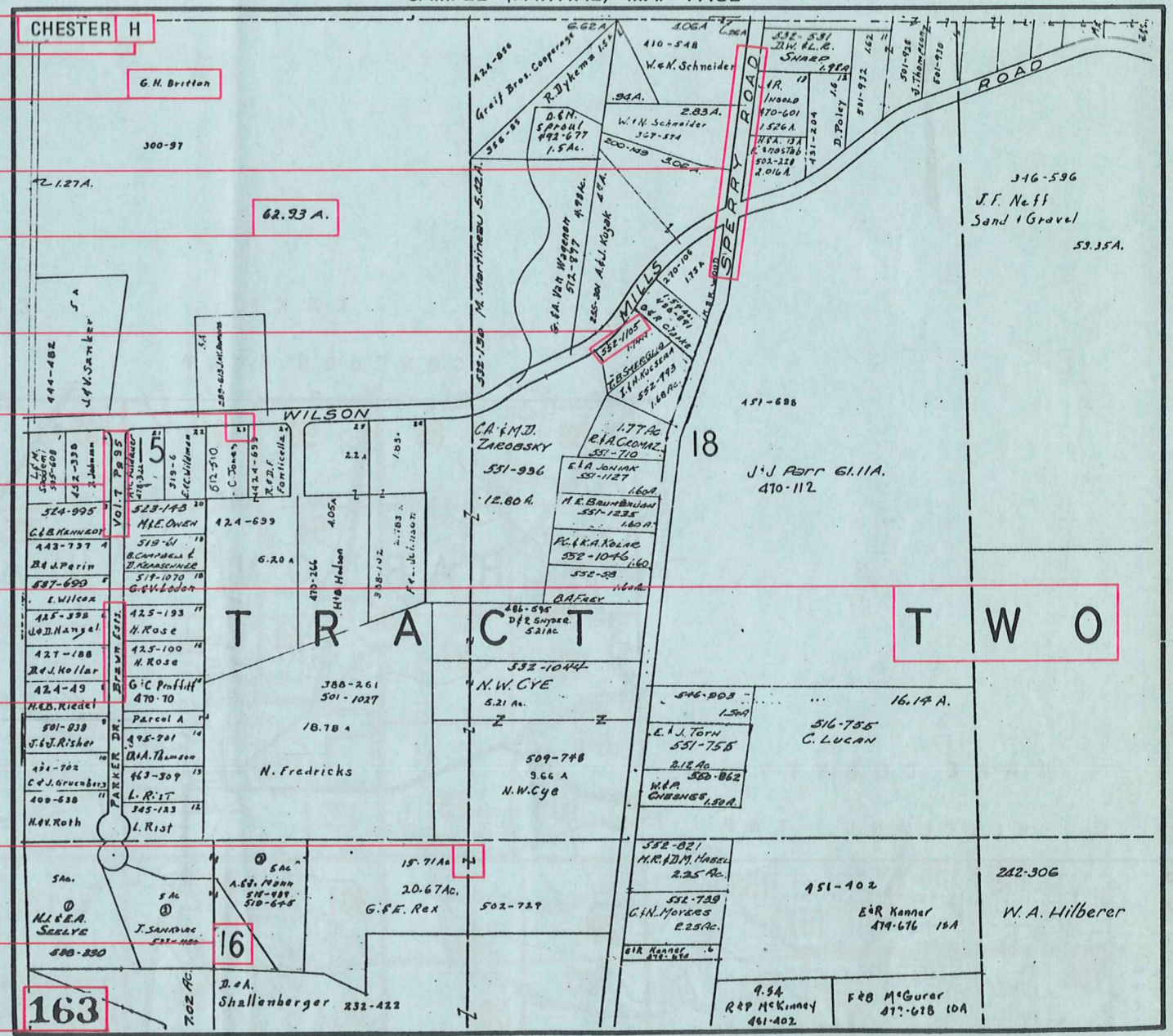
Explanation and Use Sheet for Geauga County, Ohio

SAMPLE (PARTIAL) COUNTY INDEX MAP



- Township Name
- Map Page Number (Or Letter)
- Owners Name
- Street Name
- Acreage
- Municipality Index Beginning Atlas Page Number
- Deed Book & Page
- Subdivision Lot Number
- Plat Book & Page
- Tract Number
- Atlas Page Boundary
- Subdivision Name
- Street Name
- Denotes Continuous Ownership
- Municipality Index Atlas Page Boundary
- Tract Lot Number
- Atlas Page Number

SAMPLE (PARTIAL) MAP PAGE



USE OF THE MAP VOLUME

1. LOCATE THE GENERAL AREA OF INTEREST ON THE COUNTY INDEX MAP, ATLAS PAGE 'B'.
2. A. IF PROPERTY IS IN A TOWNSHIP, NOTE THE ATLAS PAGE NUMBER. TURN TO THE PAGE INDICATED AND LOCATE SPECIFIC PARCEL OF INTEREST.
NOTE: ON SOME MAPS YOU MAY BE REFERRED TO A DETAIL SHEET SHOWING AN ENLARGEMENT OF THE AREA. THESE MAPS ARE FOUND AT THE END OF THE REGULAR MAP PAGES IN EACH TOWNSHIP EITHER IN ALPHABETICAL OR NUMERICAL SEQUENCE.
- B. IF PROPERTY IS IN A MUNICIPALITY, REFER TO THE TABLE OF CONTENTS, ATLAS PAGE 'C', AND NOTE THE BEGINNING ATLAS PAGE NUMBER FOR THE MUNICIPALITY OF INTEREST.
 - (1) TURN TO THE PAGE INDICATED. ON THIS PAGE WILL APPEAR AN INDEX MAP FOR THAT MUNICIPALITY.
 - (2) LOCATE SPECIFIC AREA OF INTEREST AND NOTE THE MAP PAGE NUMBER.
NOTE: DO NOT CONFUSE THE MAP PAGE NUMBER WITH THE ATLAS PAGE NUMBER IN THESE MUNICIPALITIES.
 - (3) FOLLOW EITHER ALPHABETICAL OR NUMERICAL SEQUENCE TO THE MAP PAGE INDICATED AND LOCATE SPECIFIC PARCEL OF INTEREST.